





Connect Your World

- Communication and management system for managers and operators
- Instant file transfer and messaging
- Real-time job site updates
- Convenient remote access and support
- Machine and equipment tracking
- Job site productivity reports – Veta ready format

Better communication, better results

Keep your field and office teams connected and productive with Sitelink3D management services. Office managers have full access to equipment status, project productivity, and other tools to effectively “manage” remotely. All the while, operators at the site complete assigned tasks as well as send and receive files and messages so project data is updated in real time. The secure services are available in two configurations, Sitelink3D and Sitelink3D Enterprise.

Sitelink3D – Boost your productivity

Sitelink3D is your solution for uninterrupted communication from the cab of your machines to any web browser. This full featured service provides equipment monitoring, remote support assistance, file transfer and messaging for any job site in the world using your PC, tablet or mobile device – allowing you increase productivity while working safely.

Sitelink3D Enterprise – Do more with your data

Sitelink3D Enterprise gives you all the benefits of Sitelink3D plus additional tools to remotely manage your project. From the start of a project, Sitelink3D Enterprise organizes your schedule and creates custom tasks according to your bid. During the course of the project, the progress is tracked in real time while specialized reports are generated for critical sign-off deliverables.



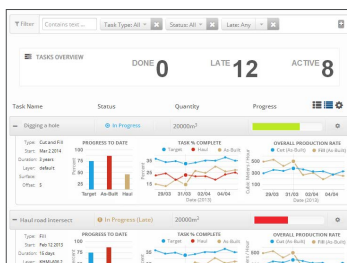
Sitelink3D App for mobile devices

Stay connected while you're on the move using our Sitelink3D App, available for both Apple and Android devices. Easily connect to any project and manage or communicate from anywhere.



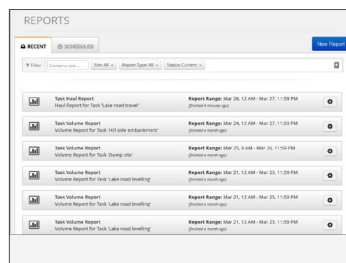
Project and machine dashboards

See a machine, a group of machines, a task or groups of tasks in real time – or in hourly, daily or weekly averages. The machine visualization includes an actual task, 3D model, offset, operator, activity, and additional information displayed as text. Production rate, operation mode, pass counts, and GNSS position are shown in easy-to-read pie or line charts.



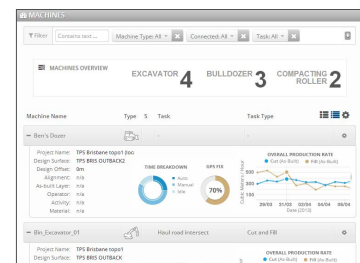
Task dashboard

- Real-time task and project data
- Filter currently active tasks by group
- Line charts for forecasts, productivity rates, and actual progress



Reports dashboard

- Print
- Export
- Schedule



Machine dashboard

- Real-time machine data
- Filter machines by task, type, and more
- Pie and line charts for productivity rates and activities



Sitelink3D – Connectivity

Monitoring

- View machine location and movement from any Internet-connected device
- Operators see other machines

Remote Support

- Train and assist operators from any Internet-connected device
- Reduce service calls using remote troubleshooting
- Update software and firmware remotely

File Transfer

- Send any file, to any or every machine
- Send files even when machines are offline
- Machines can send files to the office

Messaging

- Send messages to machines
- Receive messages from machines

Sitelink3D Enterprise – Productivity

As-built Data

- Reduce survey costs by collecting surface data as the machines work

Live Color Mapping

- Managers can view cut/fill or pass count color maps remotely via sitelink3d.net
- Operators can view live color maps as they work

Tasks

- Schedule and assign custom tasks
- Keep everyone informed

Reporting

- Monitor productivity in real time
- Quickly generate customized productivity reports
- View volume, pass count, haul, and compaction



For more information:
topconpositioning.com/sitelink3d

Specifications subject to change without notice.
 ©2016 Topcon Corporation All rights reserved.
 7010-2078 D 5/16

